



# Safeguarding framework

YFS recognise the reality that both children and adults are at risk of abuse, neglect and exploitation in our society, and that risk is amplified for people experiencing vulnerability. Further, we recognise that without intervention and attention, children and adults may be exposed to the risks of abuse, neglect, and exploitation through our work. That is why we have developed our Safeguarding Framework to inspire and guide our people to work and behave in ways which keep all people safe and uphold their basic human rights.



## Our culture



**Our culture is based on upholding the basic human rights of our service users where safety and wellbeing is our first priority.**

- Leadership
- Values, behaviours, attitudes
- Governance
- Continuous improvement
- Valuing the people we work with



## Our workforce



**Our people know how to work safely and how to prevent harm and our people are held accountable for upholding our safeguarding standards.**

- Education and Training
- Listening to children
- Listening to people experiencing vulnerability



## Our practice

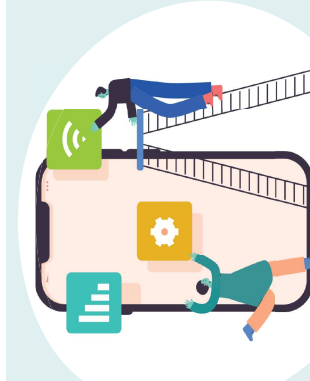


**Our work practices are designed with safety and wellbeing in mind. We do everything we can to employ safe staff and then provide clear ways of working which prioritise safety and wellbeing.**

- People are screened
- Policies
- Procedures
- How we work
- Complaints



## Our environment



**We create safe physical and virtual environments where staff are supported to engage safely with service users.**

- Designed for families
- Physical environments
- Embracing diversity
- E-Safety
- Confidentiality



## Our response



**We proactively mitigate and minimise the risk of harm as much as possible. If we suspect someone has been harmed, we respond immediately.**

- Actively looking for risks to safety
- Taking disclosure seriously
- Zero tolerance to inaction

